




OUR FINDING PLASTICS SERVICE

FINDING PLASTICS

WE HAVE A WELL DEVELOPED RECYCLING INFRASTRUCTURE THAT IS ABLE TO PROCESS THE MATERIAL, IDENTIFY END USERS AND SECURE A FULL VALUE ON ALL PLASTIC RECYCLABLES.

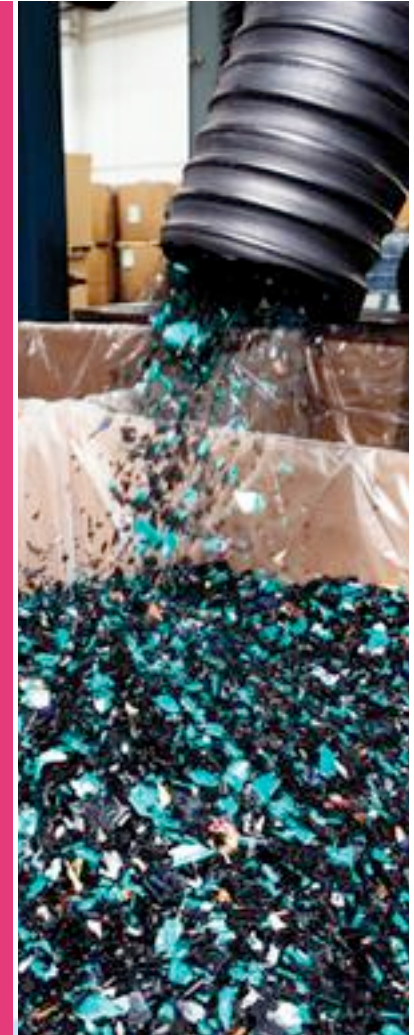
- This includes integrating the storage, transport, packaging and handling procedures into your business as a natural and organic extension to it.
- Experienced advisors to help you decide how best to segregate, handle, assess and channel the plastic.
- **WOODVENTURE** has a worldwide customer base of recyclers, re-processors and end users for all the plastic types.

The legislation surrounding waste disposal is becoming increasingly complex. **WOODVENTURE** handles all legal documentation concerning the collection and reprocessing of customers waste. In addition, for customers with a packaging obligation we can generate PRNs on any waste packaging collected and reprocessed helping to reduce the cost of compliance whilst still adhering to producer responsibility.



Our services include:

- Waste audits trail for new customers to ensure that the most suitable processing and storage equipment is installed on site.
- UK based recycling solution.
- Certificate of destruction.
- Regular waste management reviews for existing customers to minimise the cost of waste disposal and maximise the value of recyclable material.
- Training for on-site and head office staff.
- Monthly online analysis reports.



WOODVENTURE

15A Brittain Road, Hersham, Surrey KT12 4LR

Tel / Fax: 01932 222 474



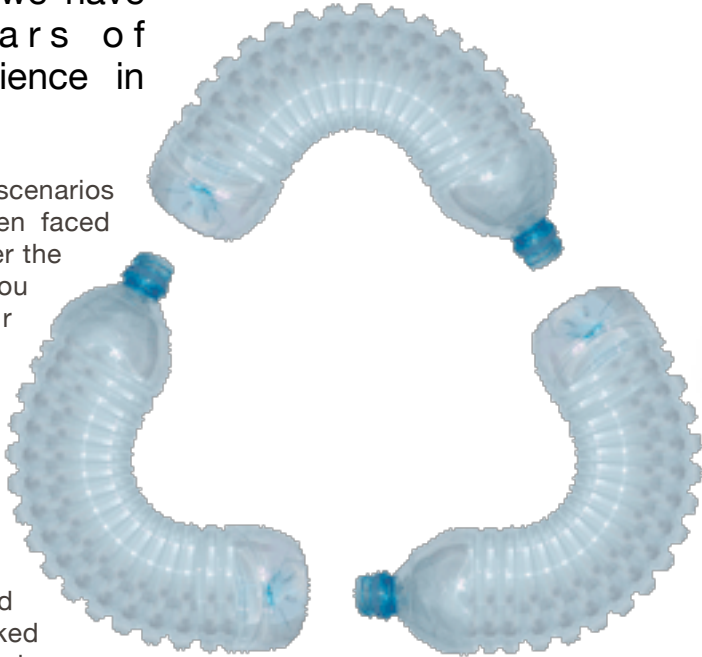


YOUR PROBLEMS SOLVED PLASTICS CONSULTING

As a company, we have over 35 years of collective experience in plastic recycling.

There are few if any scenarios that we have not been faced with and managed over the years. Let us bring you the benefit of our knowledge and expertise.

It is not as easy as it might seem to identify and put together a formula to solve the issues that your business is faced with. We have worked with companies that have spent a lot of time and no small amount of money in this endeavour and after several failed attempts realise this fact and then call us to put a plan in place and execute a successful strategy.




Unfortunately by this time they usually have spent 4 times more than necessary and 3 times longer to achieve their goals, this is a certainty unless you can go directly to the solution.



"it is better to measure many times and cut once than to measure once and have to cut over and over again"

Let us bring our expertise and experience to bear for your benefit.

WOODVENTURE



Our consultancy service will find out what your aims are, what elements you have in place that is useful and a time frame to work to, and design a bespoke solution that

will achieve the goals set out immediately. This will stop you wasting your precious resources and the attendant frustration that goes with it.

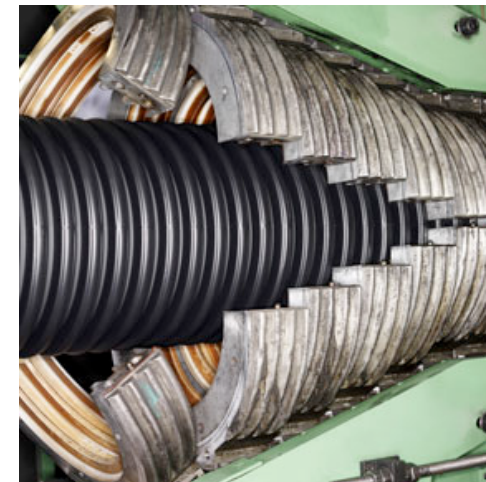


RECYCLING PLASTICS OUR METHODS

There are two primary methods that we adopt in recycling plastics, mechanical recycling and feedstock recycling;



Feedstock recycling involves breaking down polymers into their constituent parts through the use of heat or pressure. In turn these parts can be used to make new plastics and chemicals. Feedstock recycling provides benefits when the materials are being recycled are mixed or contaminated.



Mechanical recycling is the simplest method. It occurs where the plastics, which soften on heating, are, reformed into moulding granules to create new products. The process involves collection, sorting, baling then reducing the size into flake (film and sheet) or granules which may then need washing and drying. This is then re-compounded with additives and/or more virgin raw material, extruded and chopped into pellets ready for reuse.

"We hope to welcome you to our sites to see these processes in operation."

For more info please contact us on:

info@woodventure.co.uk

tel. 01932 222 474